

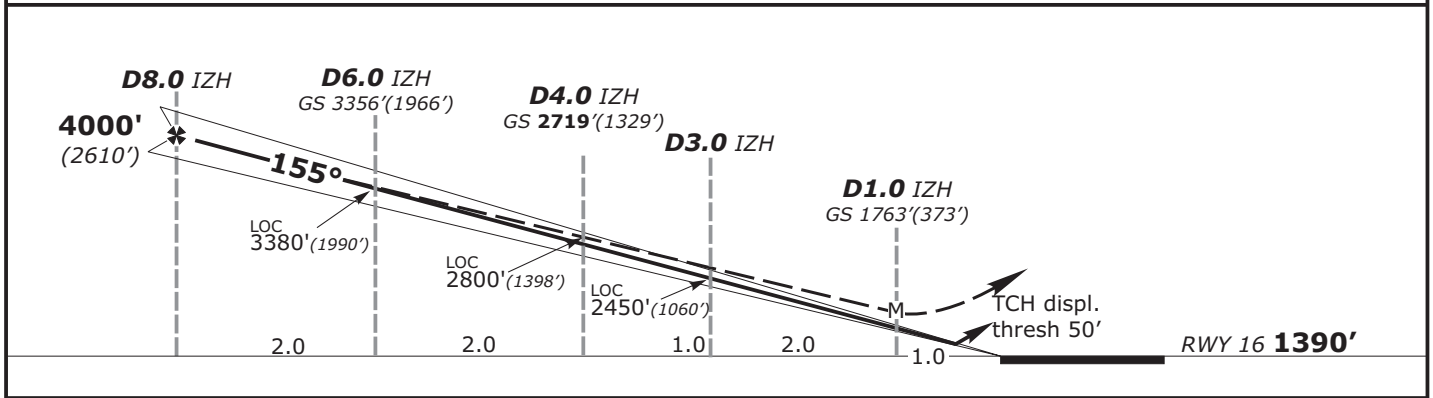
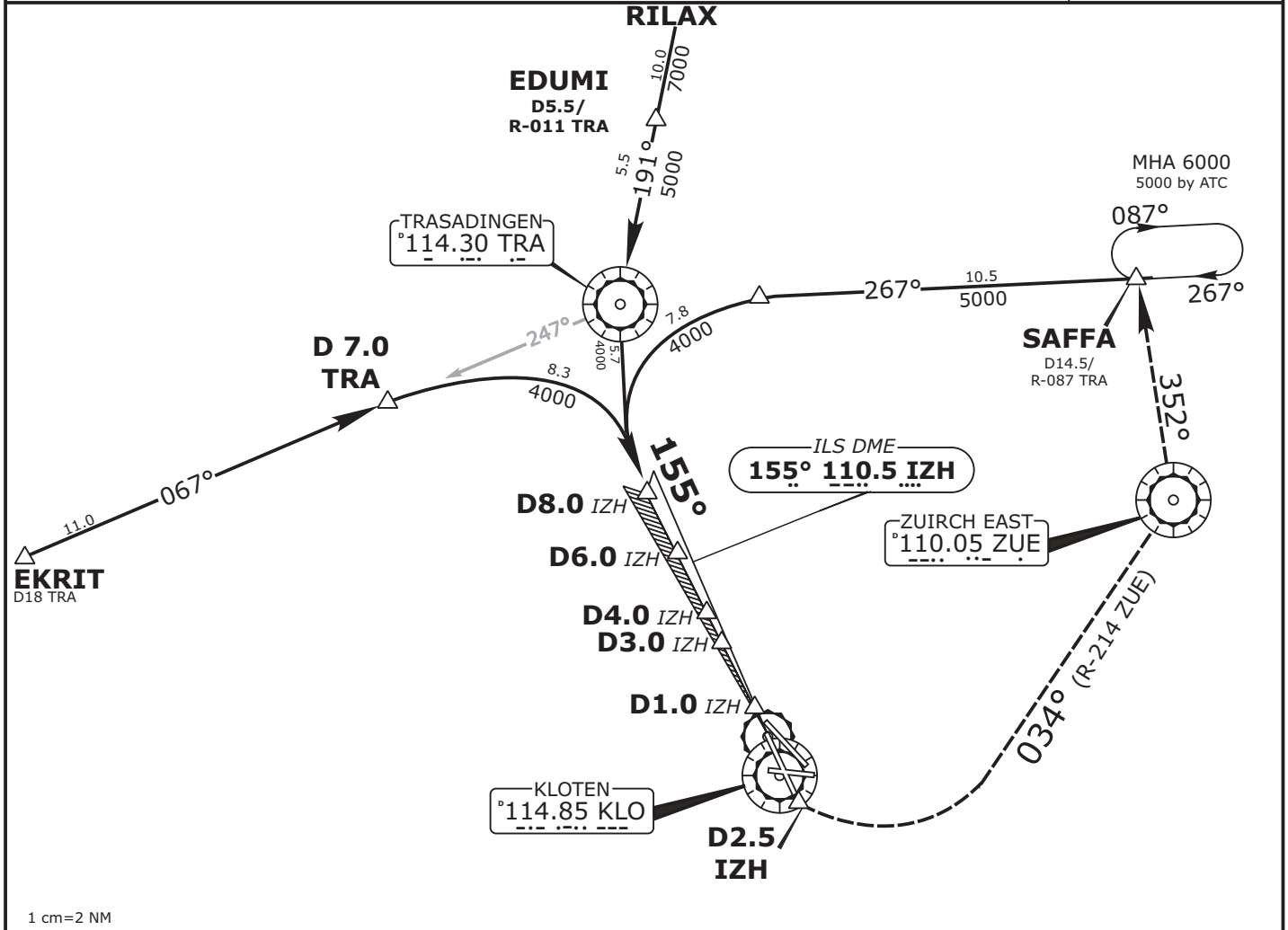
**LSZH
ZURICH**

APP CHART NO.2
Revision 08OCT03

**ZURICH, SWITZERLAND
CAT I & II ILS Rwy 16**

Valid for flight simulation use only - do not use for real life navigation

AUTOATIS 128.55	Swiss Radar LSZH_V_CTR 128.050	Zurich Arrival LSZH_V_APP 118.000	Zurich Final LSZH_F_APP 125.350	Zurich Tower LSZH_V_TWR 118.100	Zurich Ground LSZH_V_GND 121.900
LOC IKL 110.5	Final Apch Crs 155°	GS D4.0 IZH 2719' (1329')	ILS DA(H) Refer to Minimums	Apt Elev 1416' RWY 1390'	
MISSED APCH: Climb on track 155°. At D2.0 IZH passed the station, but not below 1900', turn LEFT (MAX IAS 190 KT/MIM BANK 20°) to intercept R-214 inbound ZUE VOR, then follow R-352 ZUE to SAFFA climbing to 5000'.					
Alt Set: hPa (IN on req)		Rwy Elev: 50 hPa	Trans level: By ATC	Trans alt: 7000' (3598')	



MINIMUMS		A	B	C	D	Gnd speed-Kts							
ILS CAT I LOC (GS out)	DA	1590'				ILS GS	3.0°	70	90	100	120	140	160
	DH	200' RA 187'				LOC Descent Gradient	5.1%	377	485	539	647	755	862
	RVR	550m				MAP at D1.0 IZH	LOC (GS out) with IZH DME MDA(H) 1830'(440')						
ILS CAT II	DA	RA 93' (1490')				CIRCLE-TO-LAND TO RWY 28							
	DH	100'				Prohibited Southwest of apt btn extended centerlines rwy 16&28							
	RVR	300m				MDA(H) 2650' (1234') VIS 4000m							